

Establishing the Team

- Team Structure/Organization

Business Manager

Engineering Manager

Suspension

Engineering Manager

Chassis

Powertrain

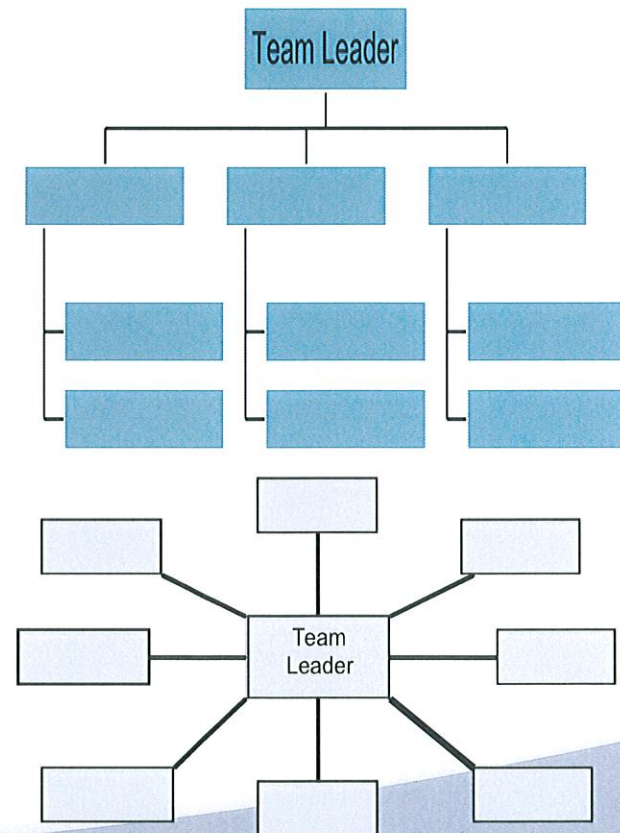
Electronics

- Pyramid or Stacked

More effective →

- Star

Many teams often resolve to this →

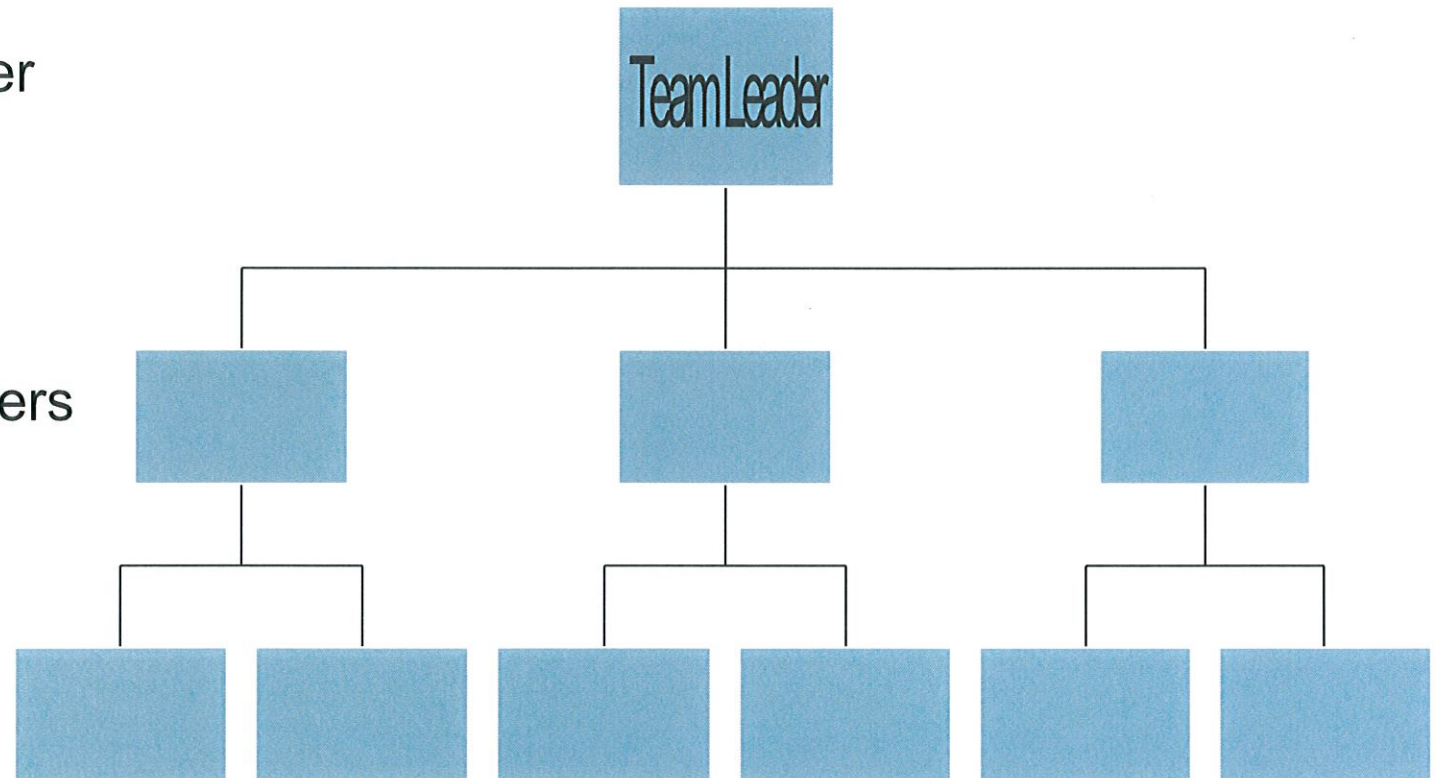


Typical CDS Team Org Chart

Project Leader

System Leaders

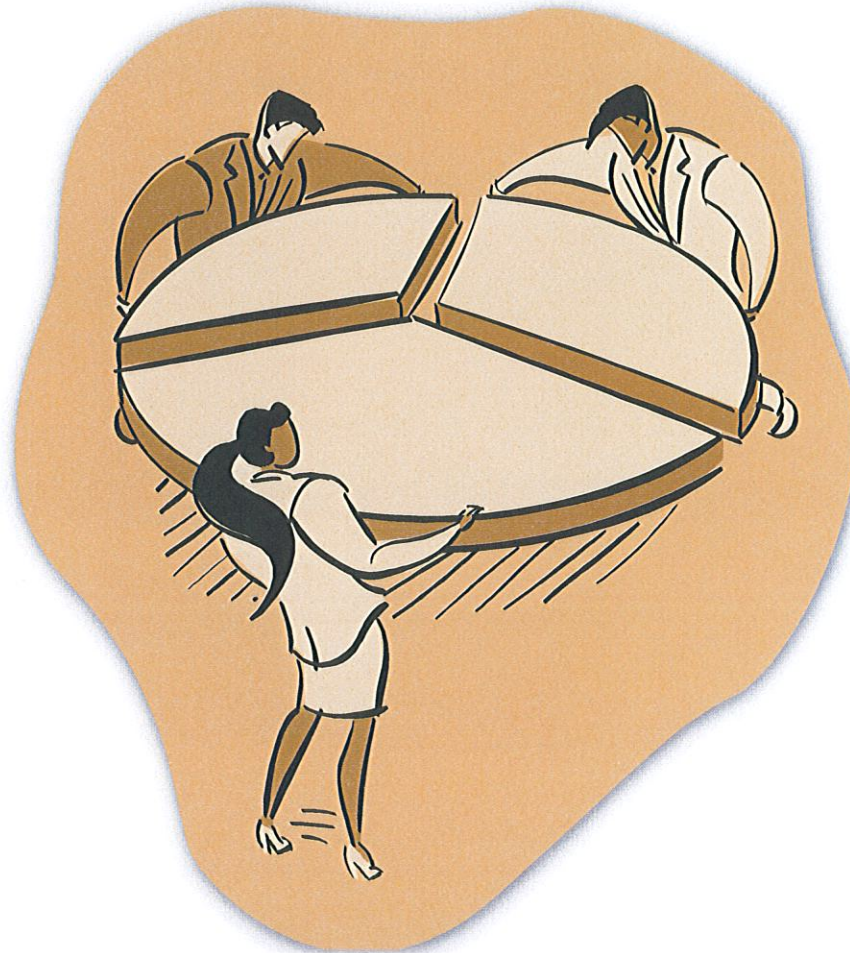
Subsystems



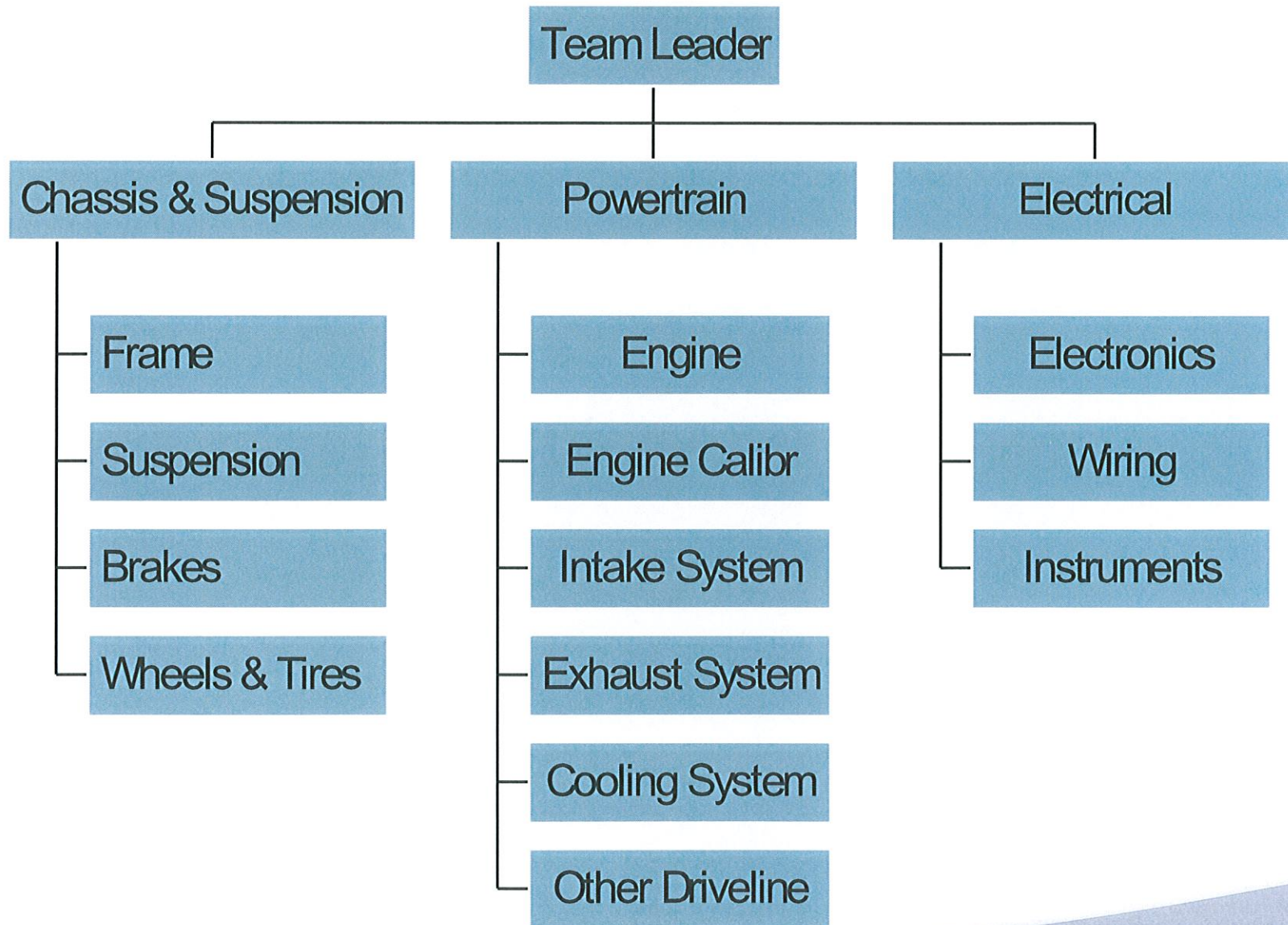
Systems → Subsystems=Tasks

The systems define the tasks and the positions on the team

- ◉ Chassis
 - Frame
 - Suspension
 - Brakes
 - Wheels & Tires
- ◉ Powertrain
 - Engine
 - Engine Calibration
 - Intake System
 - Exhaust System
 - Cooling System
 - Other Driveline
- ◉ Electrical
 - Electronics
 - Wiring
 - Instruments



CDS Team Org Chart 2



What about?

- Controls
- Packaging
- Data Acquisition
- Ergonomics
- Body/Aerodynamics
- Safety equipment

